



Bernard Hunter

MOBILE CRANES & METAL RECYCLING

MAEDA LC1385 BF



Total rated load

4.745m boom		7.625m boom		10.505m boom		13.385m boom		16.265m boom	
Working radius (m)	Total rated load (kg)	Working radius (m)	Total rated load (kg)	Working radius (m)	Total rated load (kg)	Working radius (m)	Total rated load (kg)	Working radius (m)	Total rated load (kg)
2	6000	2	6000	2	3000	2	N/A	2	N/A
2.5	6000	2.5	6000	2.5	3000	2.5	3000	2.5	N/A
3	5250	3	5260	3	3000	3	3000	3	2600
3.5	4450	3.5	4460	3.5	3000	3.5	3000	3.5	2600
4	3830	4	3820	4	3000	4	3000	4	2600
4.5	3320	4.5	3310	4.5	3000	4.5	3000	4.5	2600
5		5	2880	5	2710	5	2640	5	2600
6		6	2210	6	2140	6	2100	6	2080
7		7	1720	7	1720	7	1710	7	1710
8		8		8	1400	8	1430	8	1430
9		9		9	1150	9	1200	9	1210
10		10		10	940	10	1020	10	1040
11		11		11		11	880	11	890
12		12		12		12	750	12	770
13		13		13		13	650	13	670
14		14		14		14		14	580
15		15		15		15		15	500
16		16		16		16		16	440
16.1		16.1		16.1		16.1		16.1	430

Pick & Carry duties are available at boom lengths up to 10.505 metres.

The Total Rated Load Charts are based on the actual working radius including boom deflection. The weight of the hook (standard 4 fall - 90kg) must be included as part of the load shown in the Total Rated Load Charts.

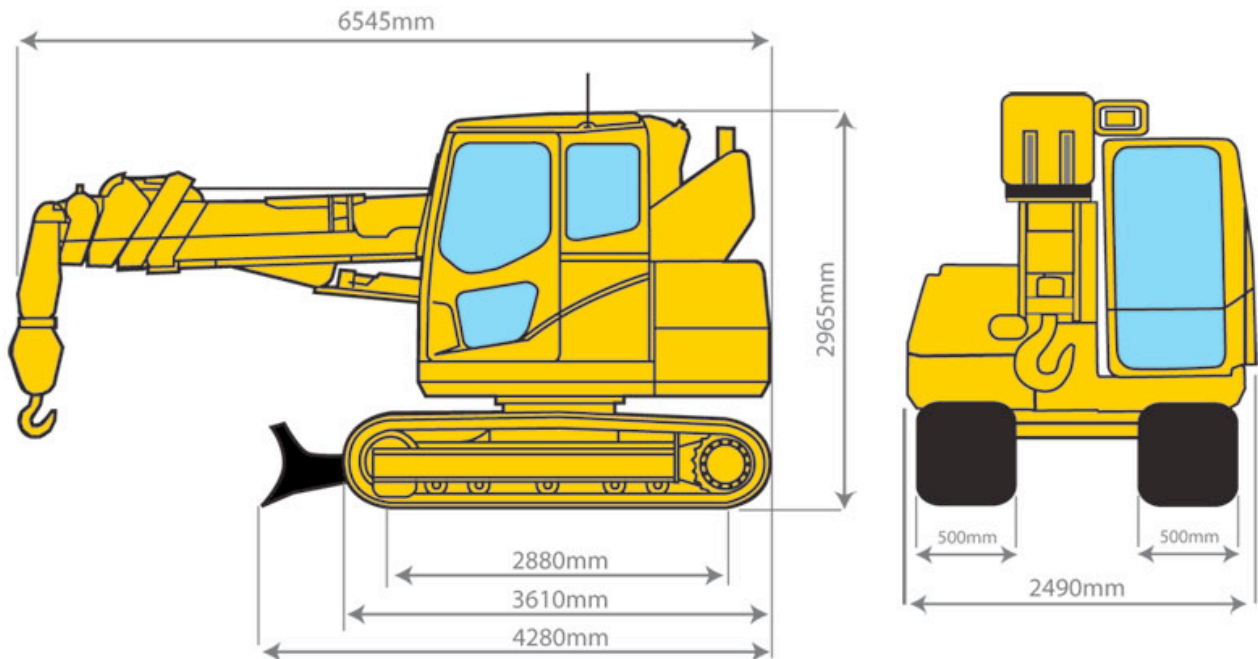
When using two fall or single fall hooks, use the appropriate four fall Total Rated Load Chart above but with a maximum load of: Two Fall - 3000kg, Single Fall - 1500kg.

Pick & Carry Duties

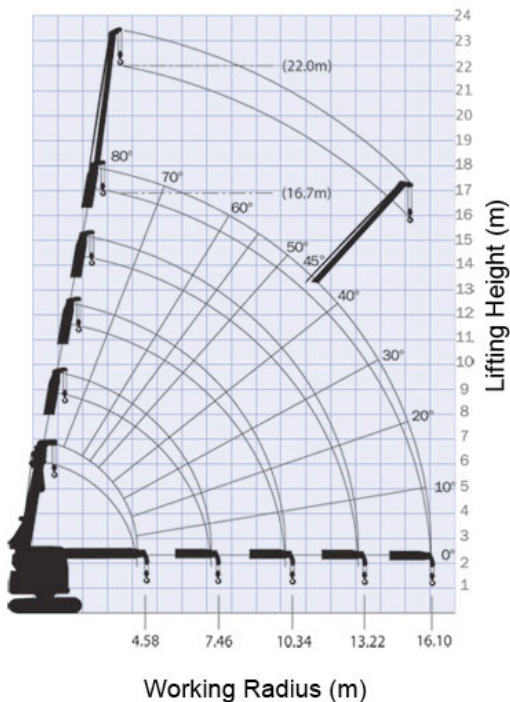
4.745m boom		7.625m boom		10.505m boom	
Working radius (m)	Total rated load (kg)	Working radius (m)	Total rated load (kg)	Working radius (m)	Total rated load (kg)
2	2000	2	2000	2	1500
2.5	2000	2.5	2000	2.5	1500
3	2000	3	2000	3	1500
3.5	2000	3.5	2000	3.5	1500
4	1915	4	1910	4	1500
4.5	1660	4.5	1655	4.5	1500
		5	1440	5	1355
		5.5	1260	5.5	1200
		6	1105	6	1070
		7	860	7	860
				7.5	775
				8	700
				8.5	635
				9	575
				10	470



MAEDA LC1385 BF



LC1385 Working range chart with fly jib



The Working Range Chart does not take into account boom deflection under load.

